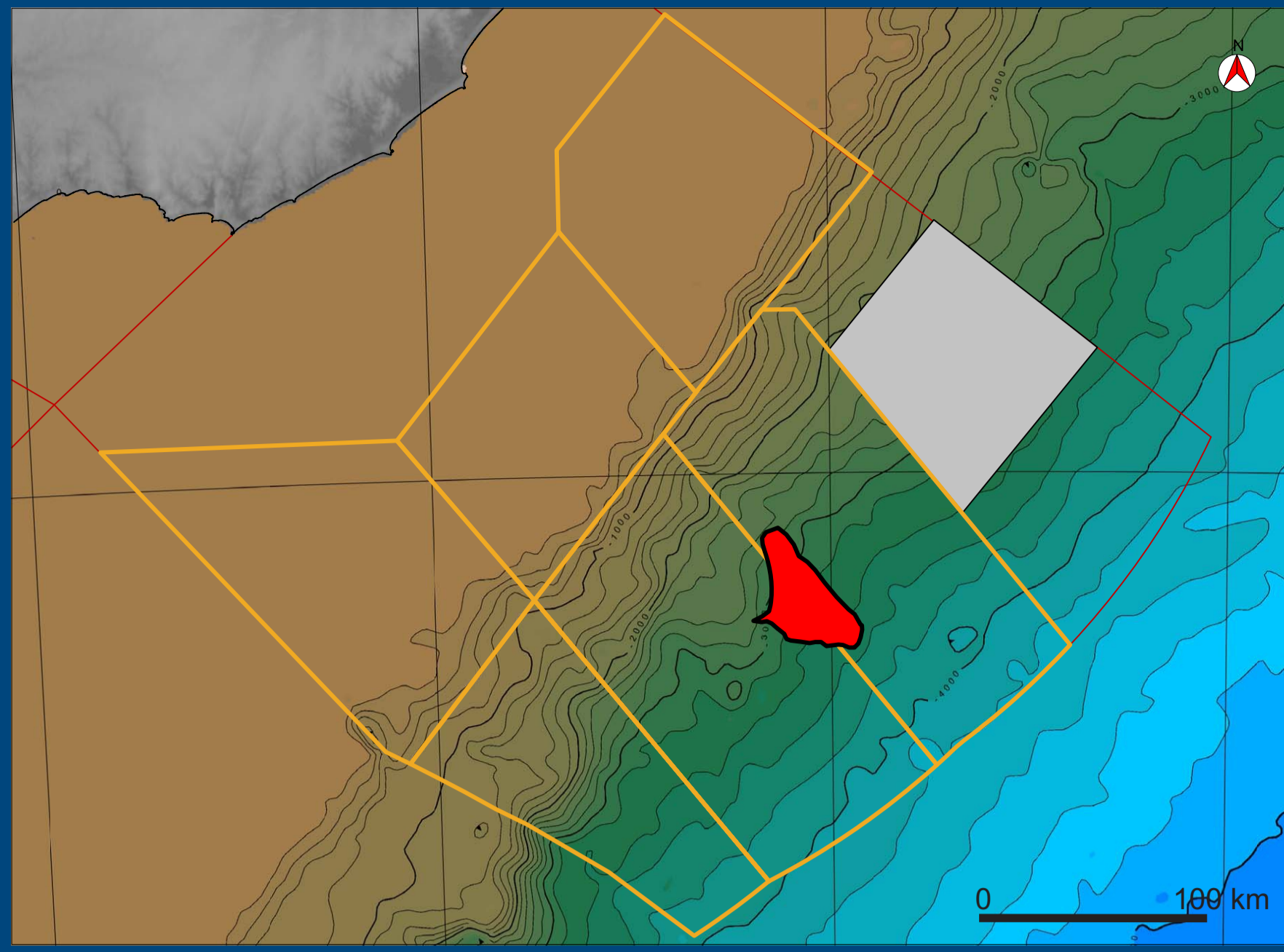
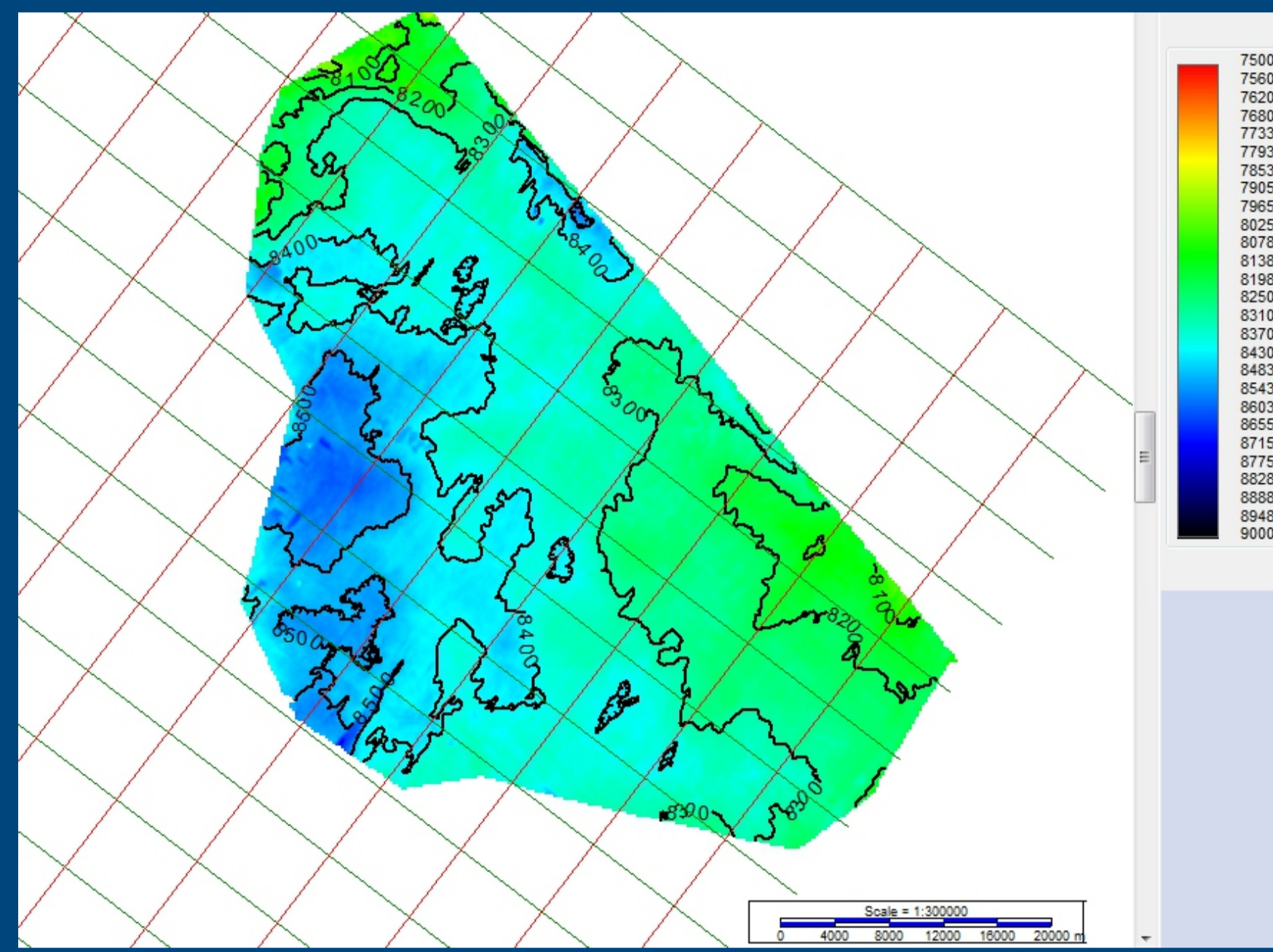


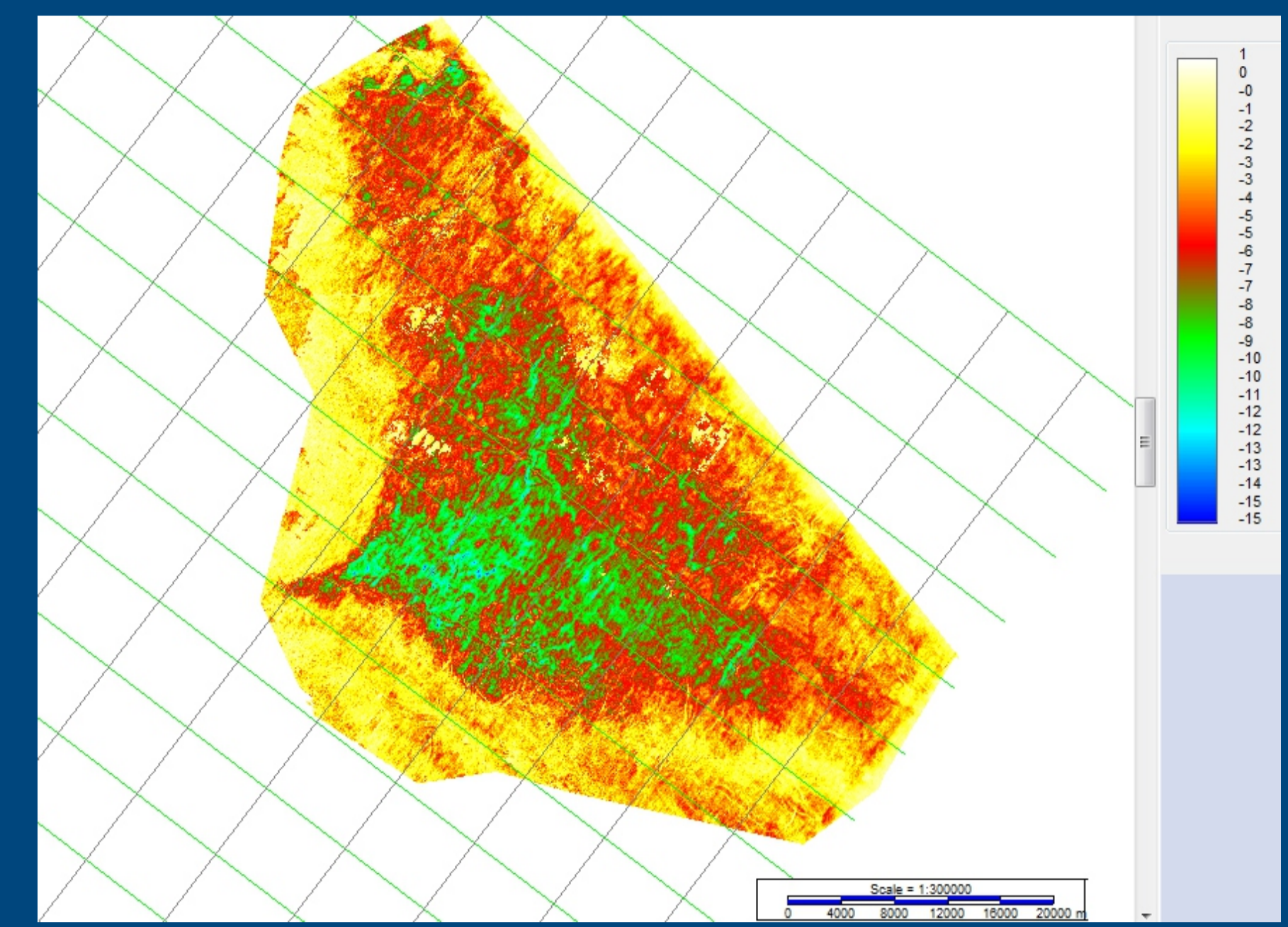
## PROSPECT LOCATION



## DEPTH STRUCTURAL MAP



## AMPLITUDE ANOMALY MAP



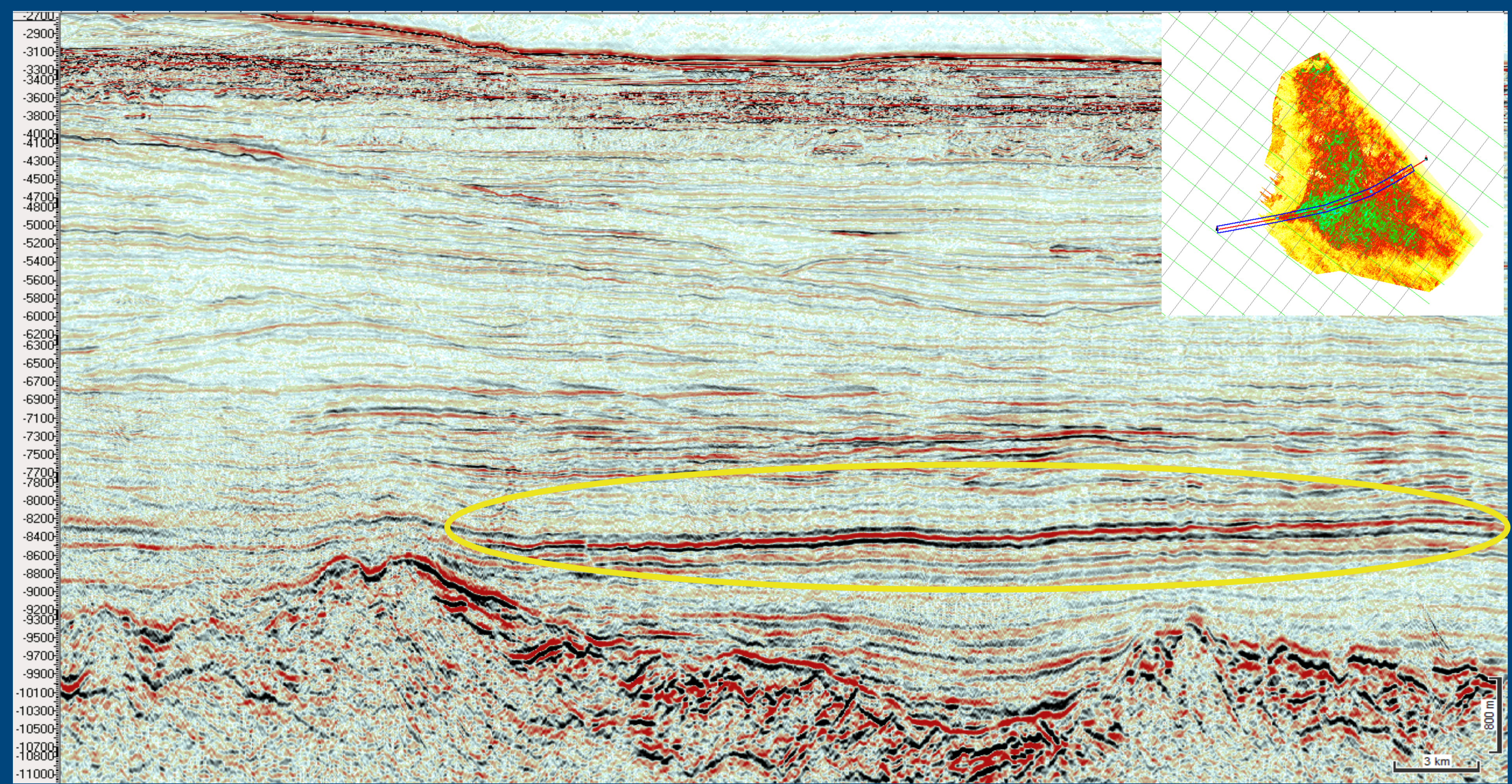
## PROSPECT AA2

**Description:**  
Faulted marine fan with amplitude anomaly

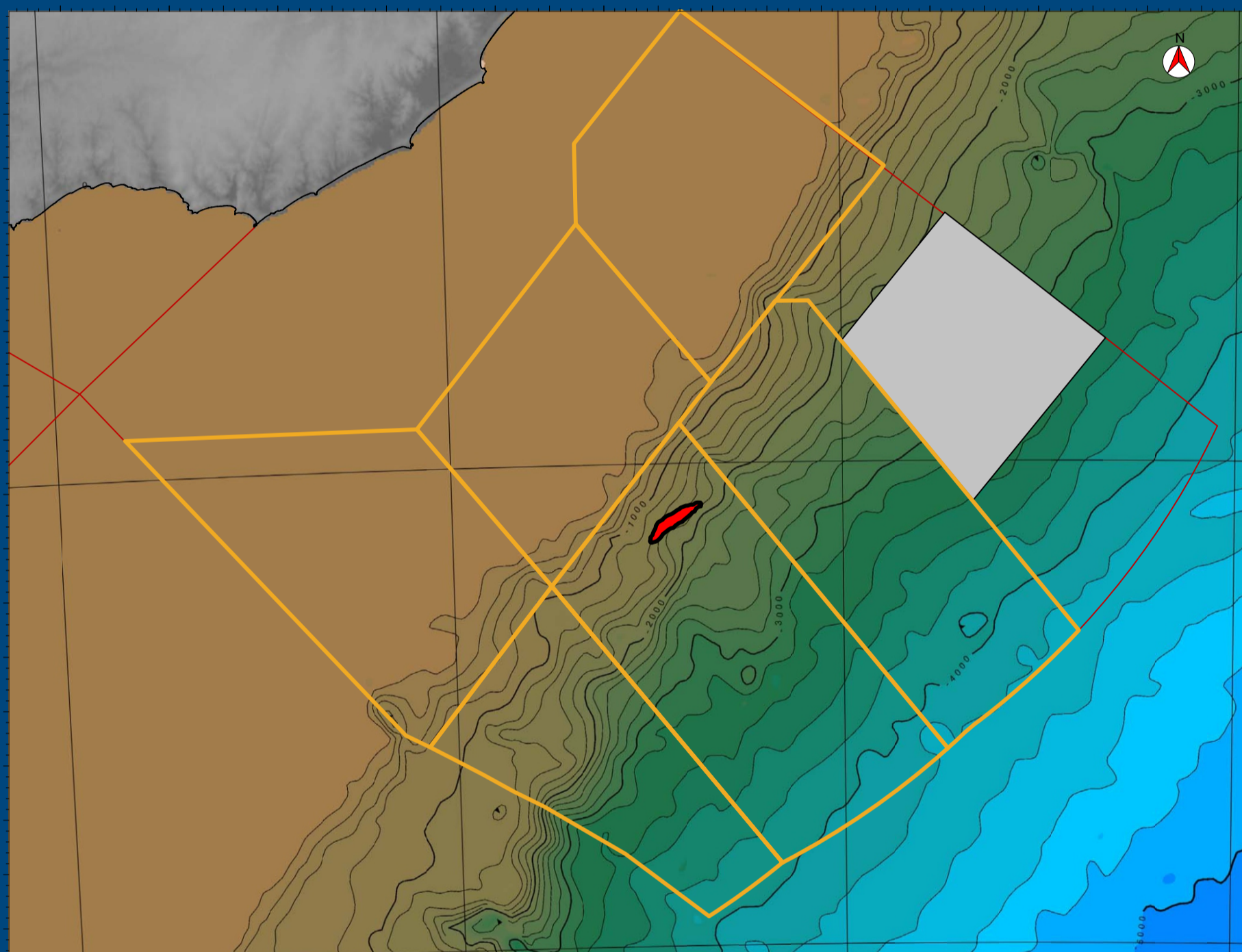
<b>Reservoir Age:</b>	Top Aptian
<b>Source Rock Age:</b>	Aptian
<b>Trap type:</b>	Mixed
<b>Avg. Bathymetry:</b>	3075 m
<b>Avg. Depth below sea level:</b>	3191 m
<b>Distance to the coast:</b>	276 km
<b>Area:</b>	107 - 486 - 1075 sq km
<b>Avg. Net Pay Thickness:</b>	15 - 35 - 56 m
<b>Fluid:</b>	Black Oil
<b>CoS:</b>	21%
<b>EUR oil :</b>	291 - 2431 - 5742 MMbbls
<b>EUR gas:</b>	0.23 - 3.14 - 7.6 TCF
<b>EUR total:</b>	348 - 2972 - 6993 MMboe

Reported ranges correspond to (P90 - Mean - P10) values

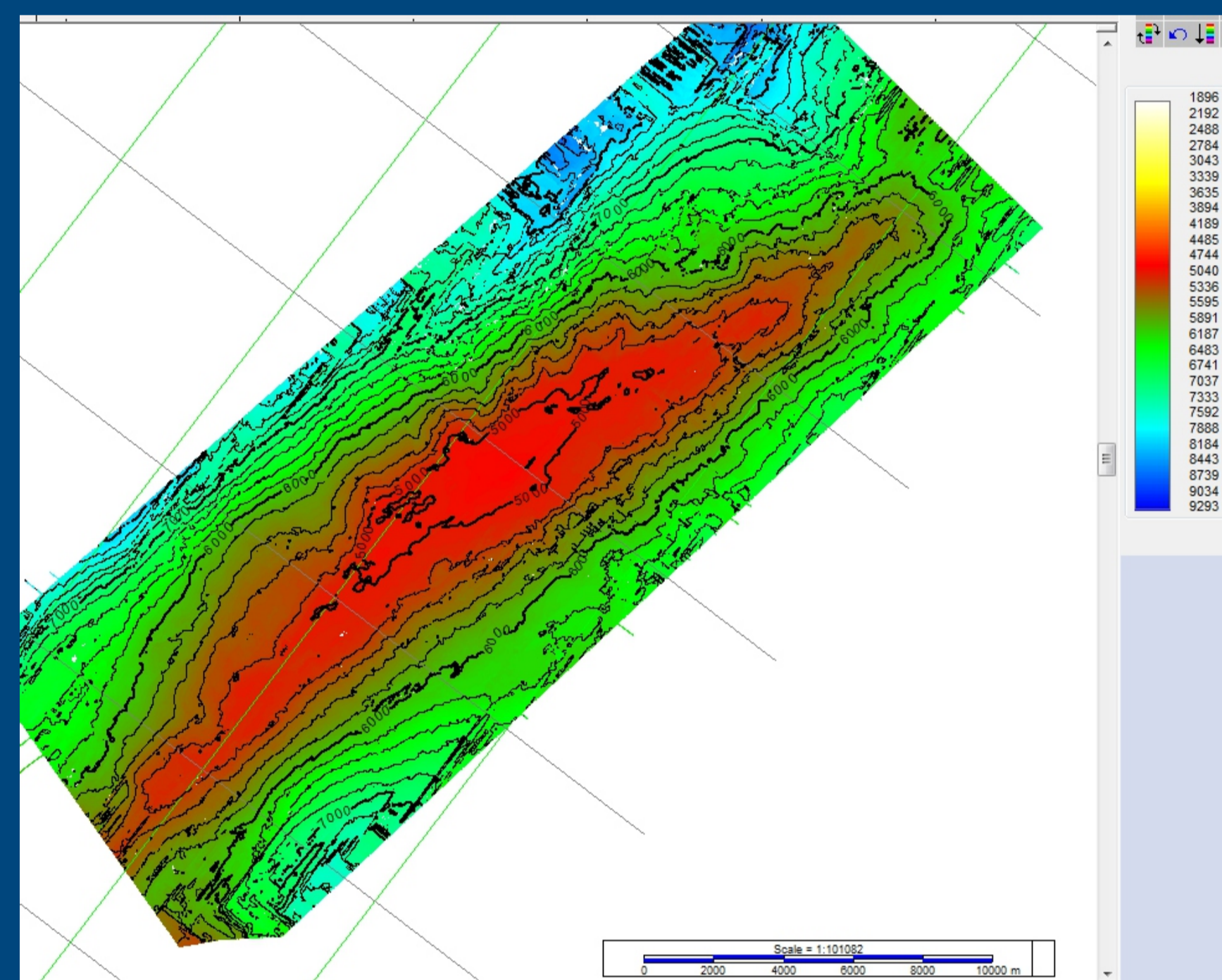
## ARBITRARY LINE THROUGH THE PROSPECT



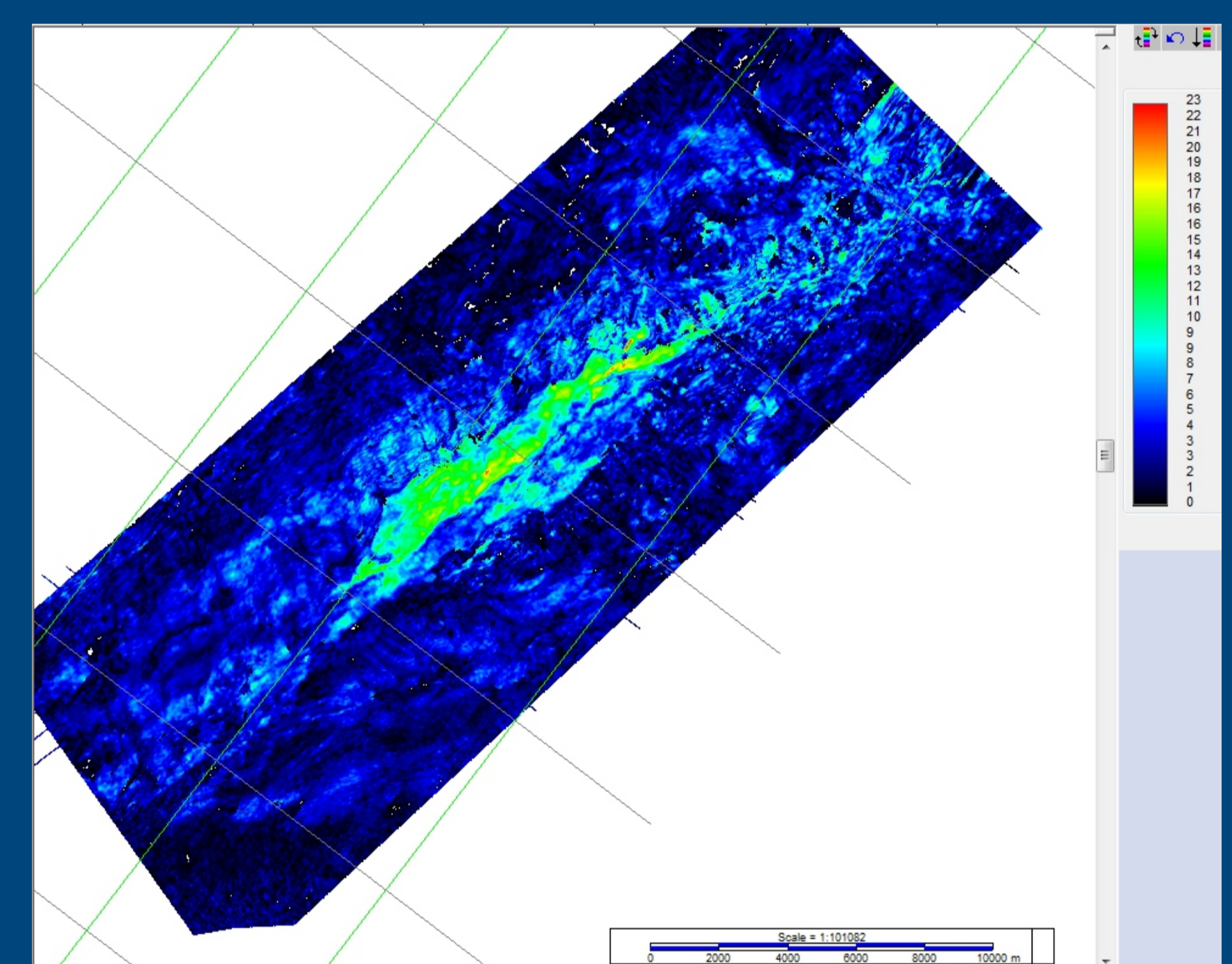
## PROSPECT LOCATION



## DEPTH STRUCTURAL MAP



## AMPLITUDE ANOMALY MAP



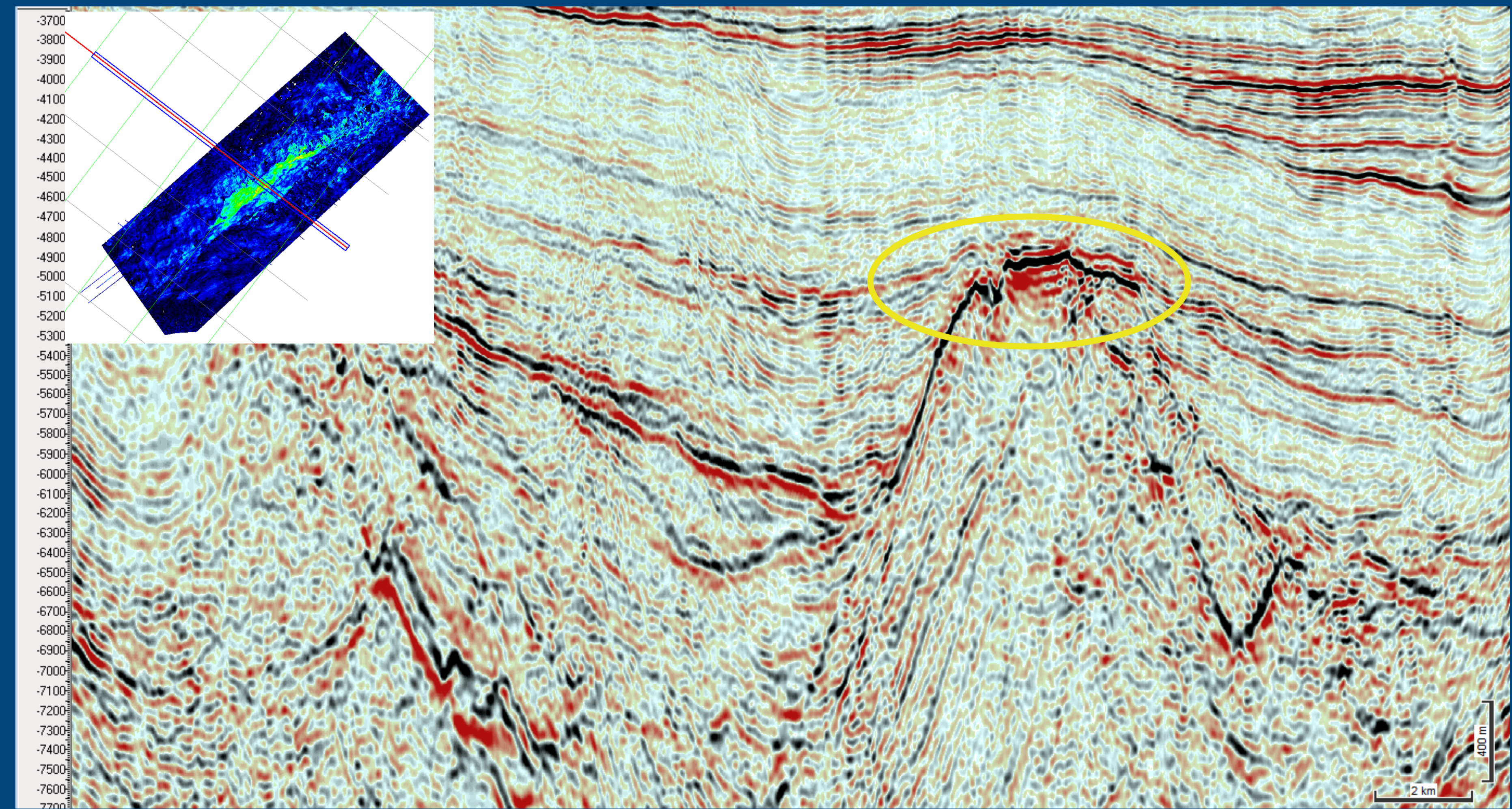
## PROSPECT CB1

**Description:**  
Isolated carbonate formation over horst (basement high)

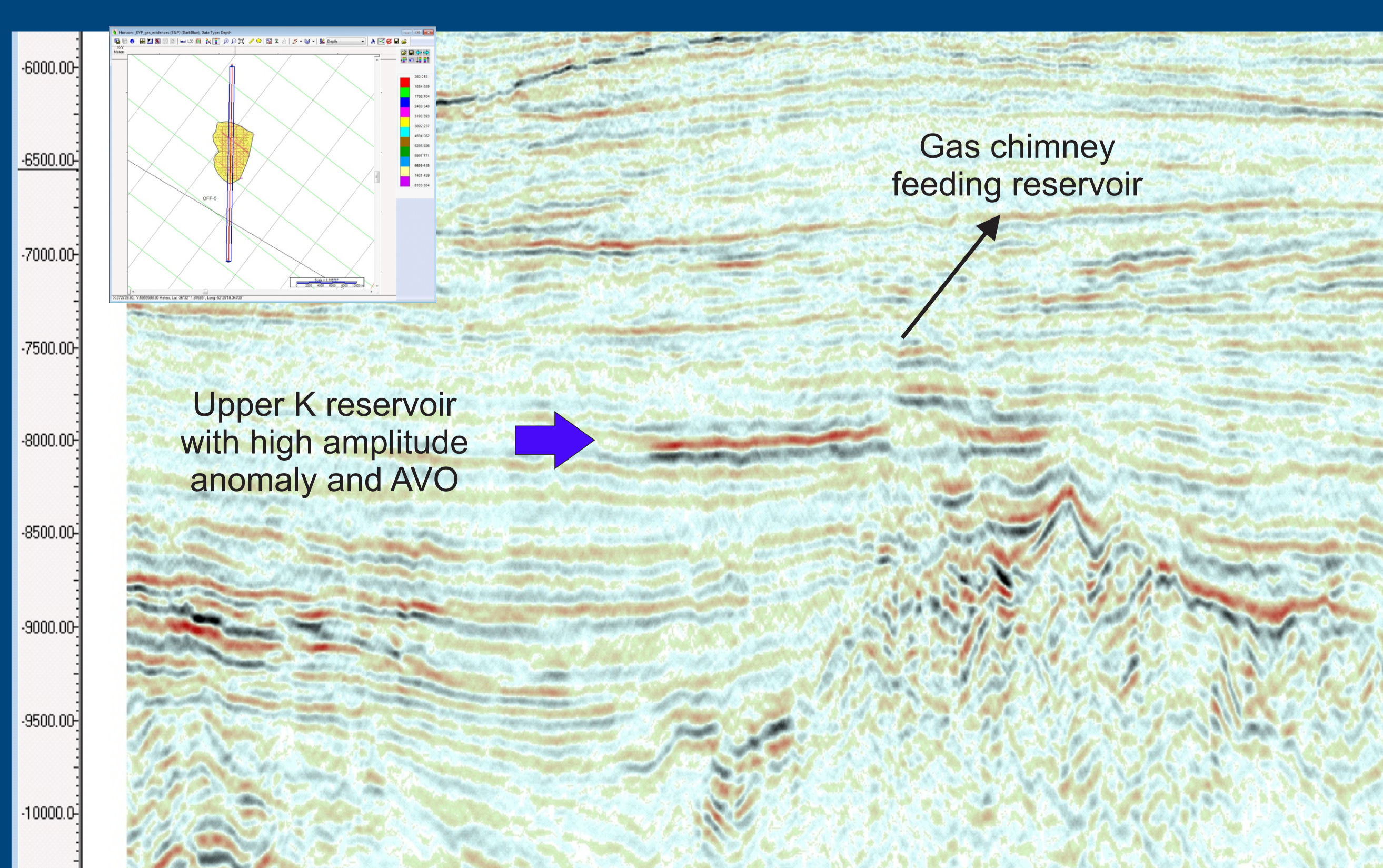
<b>Reservoir Age:</b>	Aptian
<b>Source Rock Age:</b>	Sinrift / Neocomian
<b>Trap type:</b>	Stratigraphic
<b>Avg. Bathymetry:</b>	1623 m
<b>Avg. Depth below sea level:</b>	3279 m
<b>Distance to the coast:</b>	230 km
<b>Area:</b>	46 - 69 - 95 sq km
<b>Avg. Net Pay Thickness:</b>	24 - 48 - 76 m
<b>Fluid:</b>	Volatile Oil
<b>CoS:</b>	5%
<b>EUR oil :</b>	210 - 814 - 1653 MMbbls
<b>EUR gas:</b>	0.58 - 2.24 - 4.56 TCF
<b>EUR total:</b>	308 - 1201 - 2448 MMboe

Reported ranges correspond to (P90 - Mean - P10) values

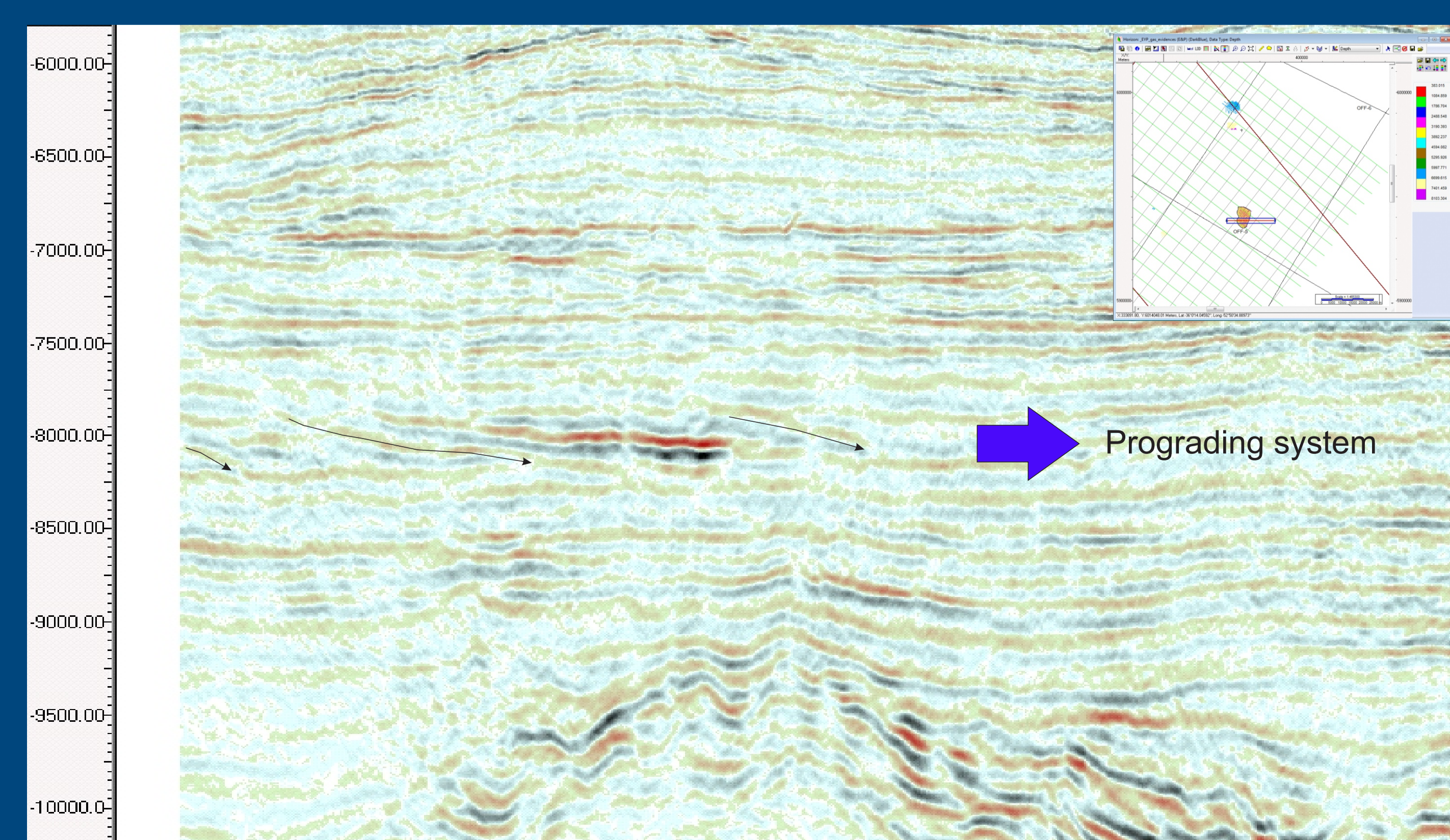
## INLINE THROUGH THE PROSPECT



## N-S SEISMIC LINE THROUGH PROSPECT PS1



## E-W SEISMIC LINE THROUGH PROSPECT PS1



Prospective resources: 13 TCF