

POSITION
LOCATION

R= 31125

VOIR DETAIL 1
SEE

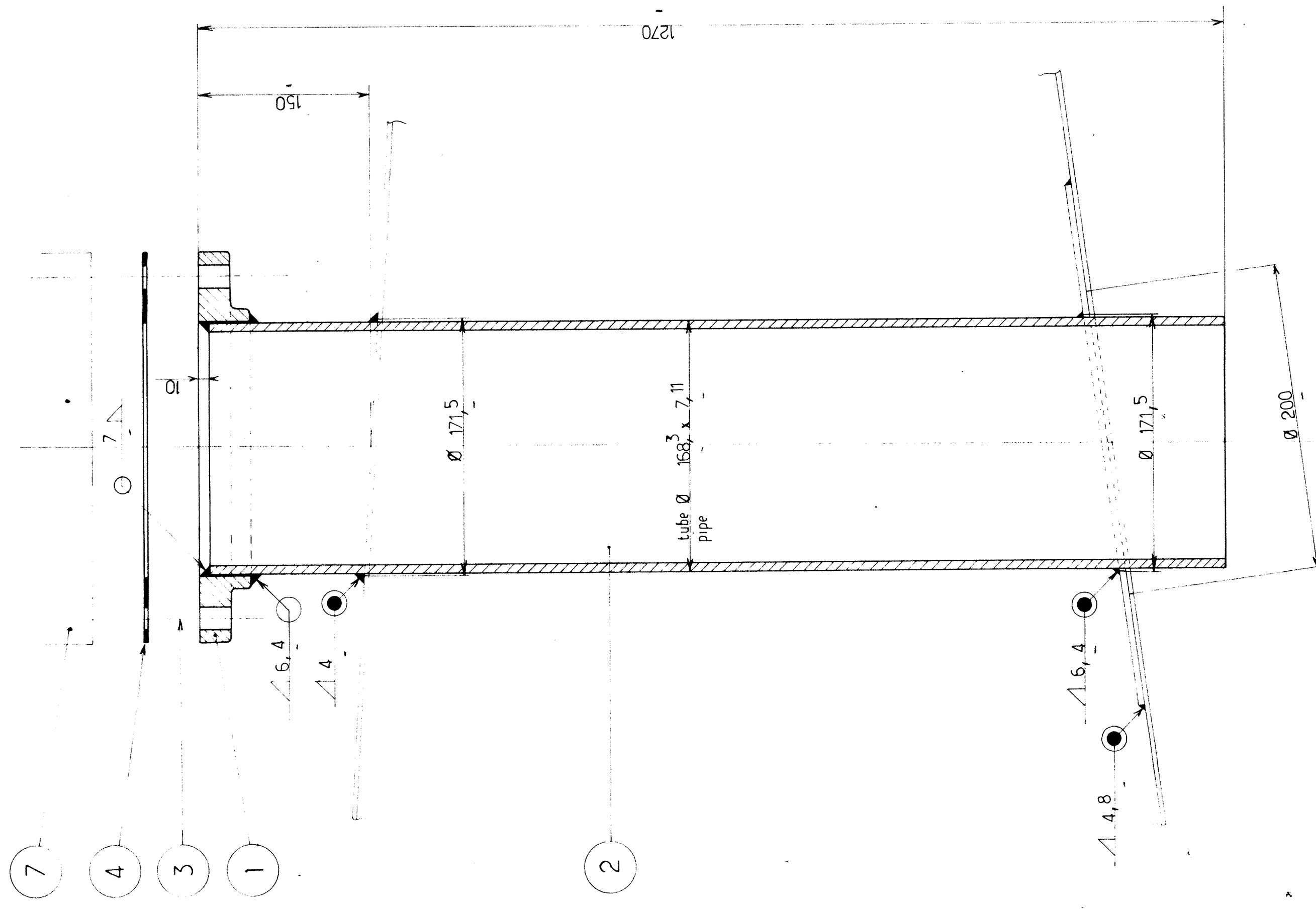
VOIR DETAIL 2
SEE

REPERAGE:
Chaque sous ensemble sera marqué du repère correspondant au dessin
Exemple : IJ.64

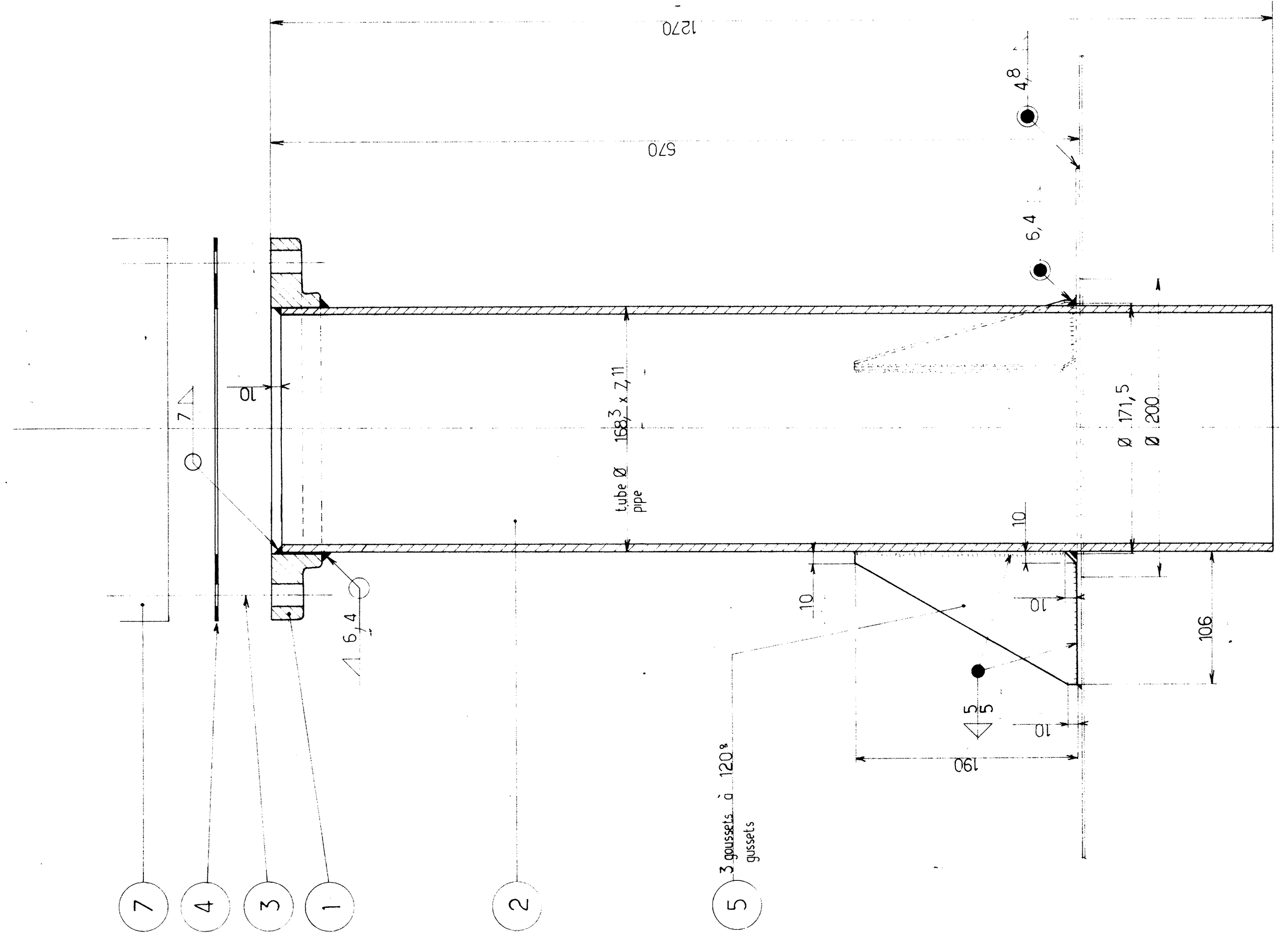
MARKING:
Each element shall be marked in accordance with drawing.

Axe réservoir
Tank axis

DETAIL 1



DETAIL 2

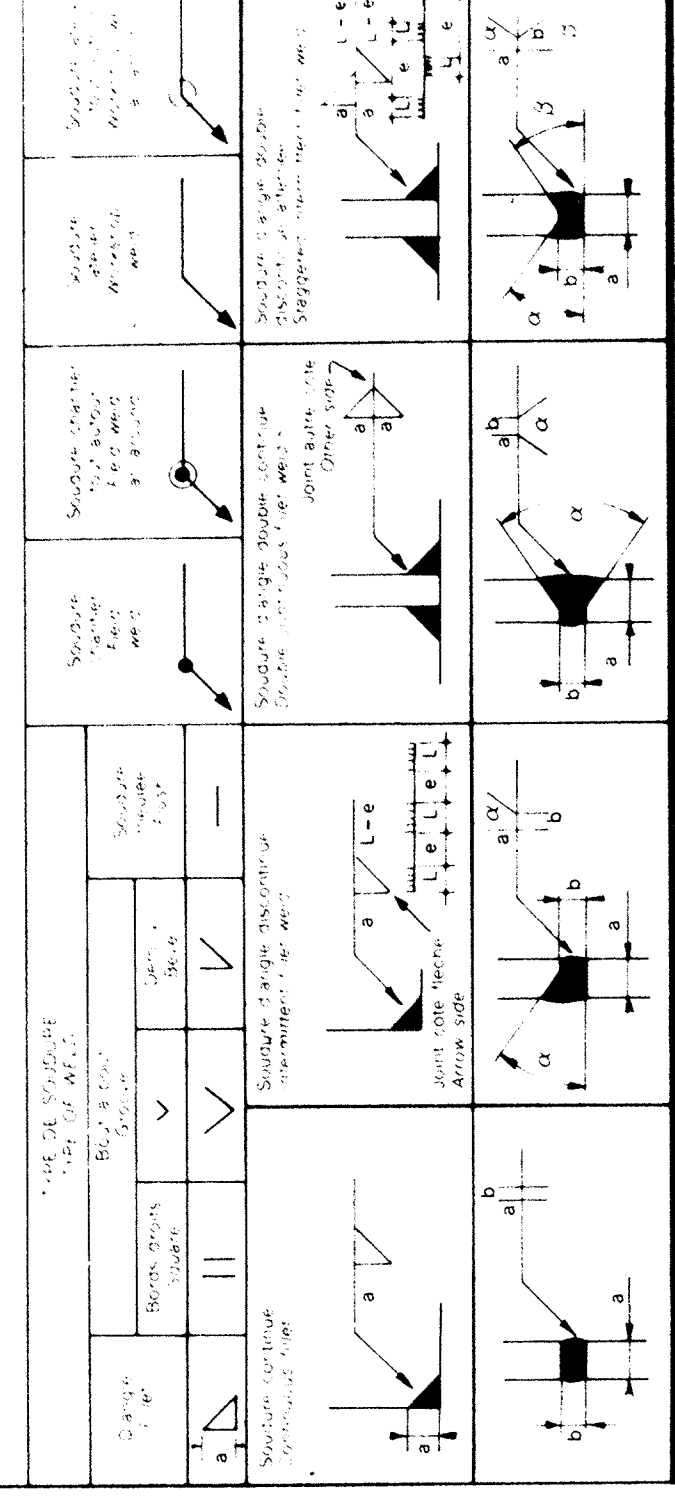


ANCAP DEPARTAMENTO DE INGENIERIA Y OBRAS
APROBADO PARA CONSTRUCCION
Ing. *[Signature]*
Fecha 1-6-76
ESTA APROBACION NO EXIME AL CONTRA-
TADO DE SU RESPONSABILIDAD QUE LE
MANTENGA INTEGRAL EN TODOS SUS TER-
MINOS.

Rep. Nbr. piece	Designation	Dimensions	Materials	Physic. Prop. (Tens. / Elong. / Mod. / Am. 2)
7	Tampon de jouge *OCECO*	M 6		
5	Gousset	190 x 106 x 5,4	E. 24.2	/
4	Joint Gasket	Ø278x175x2 81xØ22 sur Ø211	Plinger 290	/
3	Boulon	HM20x80/45	E. 26.2	/
2	Tube sch. Std	Ø168 ³ ep 7,11 L=1260	A. 106.B	36
1	Flange	Ø168 ³ ep 7,11 L=1260	A. 181.1	9
				8
				72
				8

NOMENCLATURE POUR 1 UNITE NOMBRE D'UNITES : 4
BILL OF MATERIAL FOR 1 UNIT NUMBER OF UNIT :
PLANS A CONSULTER
DRAWING TO CONSULT

N° 7548. 32.07.2 - Renfort tubulure de jouge Ø 6"
Gauge hatch nozzle reinforcement pipe Ø 6"



Reference Client: **GO**
Reference DB: **7548**
SPE Uruguay
DELATRE-BEZONS **DB**
N° 7548.32.07.1-
4 RTF/SPR 67000 m³ Ø 64 m x 22 m
TUBULURE DE JAUGE Ø 6"
GAUGE HATCH NOZZLE Ø 6"

1	
2	
3	
4	
6	